

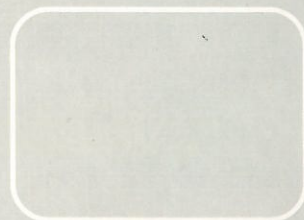
2008

山野蝴蝶飛

行政院農業委員會林業試驗所 發行

# 山野蝴蝶飛

Butterflies in the Wild



2008

行政院農業委員會林業試驗所 發行

TAIWAN FORESTRY RESEARCH INSTITUTE



# 山野蝴蝶飛

Butterflies in the Wild



2008

行政院農業委員會林業試驗所 發行

TAIWAN FORESTRY RESEARCH INSTITUTE

# 2007

農曆歲次丁亥年【豬】

## 10 October

Sun	Mon	Tue	Wed	Thu	Fri	Sat
	1	2	3	4	5	6
7	8	9	10	11	12	13
14	15	16	17	18	19	20
21	22	23	24	25	26	27
28	29	30	31			

## 11 November

Sun	Mon	Tue	Wed	Thu	Fri	Sat
				1	2	3
4	5	6	7	8	9	10
11	12	13	14	15	16	17
18	19	20	21	22	23	24
25	26	27	28	29	30	

## 12 December

Sun	Mon	Tue	Wed	Thu	Fri	Sat
						1
2	3	4	5	6	7	8
9	10	11	12	13	14	15
16	17	18	19	20	21	22
23	24	25	26	27	28	29
30	31					

# 2008

農曆歲次戊子年【鼠】

## 1 January

Sun	Mon	Tue	Wed	Thu	Fri	Sat
		1	2	3	4	5
6	7	8	9	10	11	12
13	14	15	16	17	18	19
20	21	22	23	24	25	26
27	28	29	30	31		

## 2 February

Sun	Mon	Tue	Wed	Thu	Fri	Sat
					1	2
3	4	5	6	7	8	9
10	11	12	13	14	15	16
17	18	19	20	21	22	23
24	25	26	27	28	29	

## 3 March

Sun	Mon	Tue	Wed	Thu	Fri	Sat
						1
2	3	4	5	6	7	8
9	10	11	12	13	14	15
16	17	18	19	20	21	22
23	24	25	26	27	28	29
30	31					

## 4 April

Sun	Mon	Tue	Wed	Thu	Fri	Sat
		1	2	3	4	5
6	7	8	9	10	11	12
13	14	15	16	17	18	19
20	21	22	23	24	25	26
27	28	29	30			

## 5 May

Sun	Mon	Tue	Wed	Thu	Fri	Sat
				1	2	3
4	5	6	7	8	9	10
11	12	13	14	15	16	17
18	19	20	21	22	23	24
25	26	27	28	29	30	31

## 6 June

Sun	Mon	Tue	Wed	Thu	Fri	Sat
1	2	3	4	5	6	7
8	9	10	11	12	13	14
15	16	17	18	19	20	21
22	23	24	25	26	27	28
29	30					

## 7 July

Sun	Mon	Tue	Wed	Thu	Fri	Sat
		1	2	3	4	5
6	7	8	9	10	11	12
13	14	15	16	17	18	19
20	21	22	23	24	25	26
27	28	29	30	31		

## 8 August

Sun	Mon	Tue	Wed	Thu	Fri	Sat
					1	2
3	4	5	6	7	8	9
10	11	12	13	14	15	16
17	18	19	20	21	22	23
24	25	26	27	28	29	30
31						

## 9 September

Sun	Mon	Tue	Wed	Thu	Fri	Sat
	1	2	3	4	5	6
7	8	9	10	11	12	13
14	15	16	17	18	19	20
21	22	23	24	25	26	27
28	29	30				

## 10 October

Sun	Mon	Tue	Wed	Thu	Fri	Sat
			1	2	3	4
5	6	7	8	9	10	11
12	13	14	15	16	17	18
19	20	21	22	23	24	25
26	27	28	29	30	31	

## 11 November

Sun	Mon	Tue	Wed	Thu	Fri	Sat
						1
2	3	4	5	6	7	8
9	10	11	12	13	14	15
16	17	18	19	20	21	22
23	24	25	26	27	28	29
30						

## 12 December

Sun	Mon	Tue	Wed	Thu	Fri	Sat
	1	2	3	4	5	6
7	8	9	10	11	12	13
14	15	16	17	18	19	20
21	22	23	24	25	26	27
28	29	30	31			



▲ 台灣檫樹(寬尾鳳蝶幼蟲寄主植物) Host plant *Sassafras randaiense* of *Agehana maraho*

2009

農曆歲次己丑年【牛】

1 January

Sun	Mon	Tue	Wed	Thu	Fri	Sat
				1	2	3
4	5	6	7	8	9	10
11	12	13	14	15	16	17
18	19	20	21	22	23	24
25	26	27	28	29	30	31

2 February

Sun	Mon	Tue	Wed	Thu	Fri	Sat
1	2	3	4	5	6	7
8	9	10	11	12	13	14
15	16	17	18	19	20	21
22	23	24	25	26	27	28

3 March

Sun	Mon	Tue	Wed	Thu	Fri	Sat
1	2	3	4	5	6	7
8	9	10	11	12	13	14
15	16	17	18	19	20	21
22	23	24	25	26	27	28
29	30	31				

4 April

Sun	Mon	Tue	Wed	Thu	Fri	Sat
			1	2	3	4
5	6	7	8	9	10	11
12	13	14	15	16	17	18
19	20	21	22	23	24	25
26	27	28	29	30		

5 May

Sun	Mon	Tue	Wed	Thu	Fri	Sat
					1	2
3	4	5	6	7	8	9
10	11	12	13	14	15	16
17	18	19	20	21	22	23
24	25	26	27	28	29	30
31						

6 June

Sun	Mon	Tue	Wed	Thu	Fri	Sat
	1	2	3	4	5	6
7	8	9	10	11	12	13
14	15	16	17	18	19	20
21	22	23	24	25	26	27
28	29	30				

7 July

Sun	Mon	Tue	Wed	Thu	Fri	Sat
			1	2	3	4
5	6	7	8	9	10	11
12	13	14	15	16	17	18
19	20	21	22	23	24	25
26	27	28	29	30	31	

8 August

Sun	Mon	Tue	Wed	Thu	Fri	Sat
						1
2	3	4	5	6	7	8
9	10	11	12	13	14	15
16	17	18	19	20	21	22
23	24	25	26	27	28	29
30	31					

9 September

Sun	Mon	Tue	Wed	Thu	Fri	Sat
		1	2	3	4	5
6	7	8	9	10	11	12
13	14	15	16	17	18	19
20	21	22	23	24	25	26
27	28	29	30			

10 October

Sun	Mon	Tue	Wed	Thu	Fri	Sat
				1	2	3
4	5	6	7	8	9	10
11	12	13	14	15	16	17
18	19	20	21	22	23	24
25	26	27	28	29	30	31

11 November

Sun	Mon	Tue	Wed	Thu	Fri	Sat
1	2	3	4	5	6	7
8	9	10	11	12	13	14
15	16	17	18	19	20	21
22	23	24	25	26	27	28
29	30					

12 December

Sun	Mon	Tue	Wed	Thu	Fri	Sat
		1	2	3	4	5
6	7	8	9	10	11	12
13	14	15	16	17	18	19
20	21	22	23	24	25	26
27	28	29	30	31		

# 序

為台灣生態留下印記的人 ——

## 蝴蝶先生蔡百峻

1988年，蔡百峻是國內第一位在野外拍到台灣國寶級-寬尾鳳蝶 (*Agehana maraho*) 的生態攝影家，也是台灣蝴蝶攝影紀錄累積最多種類的人，因此，媒體界封他為「蝴蝶先生」。

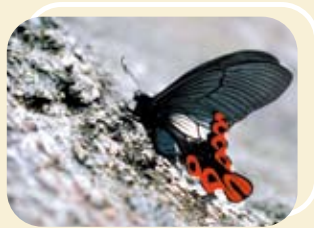
29年前，蔡百峻立志為野生動物做攝影紀錄，他以鏡頭替代獵槍，不殺生、不害生，也藉由他所拍攝到的諸多野生動物影像傳播，讓社會大眾能迅速認識到我們生活周邊蟲魚鳥獸之許多不可思議的生命現象，喚醒人們沉睡已久的心靈。

蔡百峻先生更嘗試以生態影像藝術為橋樑，吸引大眾關注，用以重建人類與自然的和諧關係，珍惜自然資源，致力於地球萬物共存共榮，期待大家能為保護世界生物財富共同努力。

行政院農業委員會林業試驗所

金恒鑣 謹識

2007年12月1日



# Preface

## A man who's conservational performance has left a mark upon the land of Taiwan — Mr. Butterfly Bae-chun TSAI

In 1988, the life history of the broad-tailed swallowtail butterfly (*Aeghana maraho*), a rare species in Taiwan, was first photographed in the field by Mr. Bae-chun Tsai. Mr. Tsai also holds the record for having photographed the largest variety of Taiwan's butterflies. Deservedly, he has been dubbed “Mr. Butterfly” by the media.

Twenty-nine years ago, Mr. Tsai first made up his mind to film the wildlife of Taiwan. Using camera instead of gun, he has practiced the credo of not killing a living being and not harming any either. Through the images captured by his lenses, the wildlife scenes of Taiwan have spread far and wide, making the general public aware of the myriad and wondrous phenomena of life around us. His delicate art works have galvanized many a lethargic mind.

Mr. Tsai has also attempted to use ecological photography as a means to engage public attention, to enable the reestablishment of a close relationship between mankind and nature. His art presents a vision wherein our endowment of natural resources shall be treasured and all life on the earth shall share a prosperous common future. We must all cherish this vision. We also hope that by the example of Mr. Tsai's wonderful works, everyone will strive to preserve the world's biological richness.



Hen-biau KING, Ph.D.  
Director, Taiwan Forestry Research Institute  
President, Society of Subtropical Ecology





# 小蛇目蝶

*Mycalesis francisca formosana*



## 小蛇目蝶

小蛇目蝶身上有大大小小如錢幣的圓形圖案，台灣原住民族傳說此蝶飛入家中會帶來更多財富。

## bush brown

Coinlike dots cover the wings of the bush brown. It is said that if this butterfly enters a home, good fortune will follow close behind.

1 January

Sun	Mon	Tue	Wed	Thu	Fri	Sat
		1	2	3	4	5
6	7	8	9	10	11	12
13	14	15	16	17	18	19
20	21	22	23	24	25	26
27	28	29	30	31		

MON

31  
廿二

January

TUE

2008 1  
元旦

WED

2  
廿四

THU

3  
廿五

FRI

4  
廿六

SAT

5  
廿七

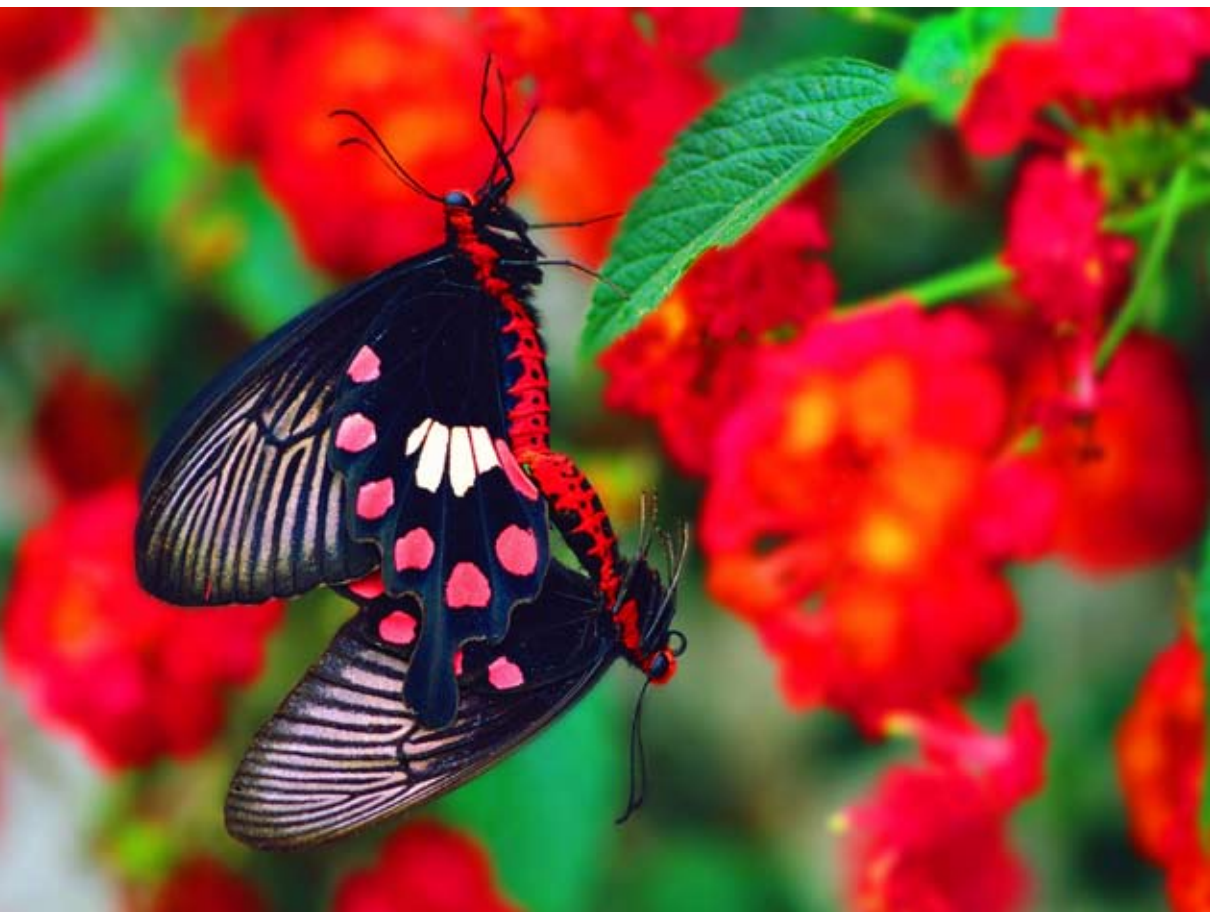
SUN

6  
小寒



# 紅紋鳳蝶

*Pachliopta aristolochiae interpositus*



## 紅紋鳳蝶

紅紋鳳蝶在火紅的花簇中進行交配婚禮，喜氣盎然。

## common rose

A pair of common roses is mating joyfully among these striking blossoms.

1

January

MON

7  
廿九

TUE

8  
十二月大

WED

9  
初二

THU

10  
初三

FRI

11  
初四

SAT

12  
初五

SUN

13  
初六



◀ 產卵中的紅紋鳳蝶

Egg laying of a female *Pachliopta aristolochiae interpositus*

14

初七

MON

15

初八

TUE

16

初九

WED

17

初十

THU

18

十一

FRI

19

十二

SAT

20

十三

SUN





◀ 紅紋鳳蝶的幼蟲

Larva of *Pachliopta aristolochiae interpositus*

1

January

MON

21  
大寒

TUE

22  
十五

WED

23  
十六

THU

24  
十七

FRI

25  
十八

SAT

26  
十九

SUN

27  
二十

# 三星雙尾燕蝶

*Spindasis syama*



## 三星雙尾燕蝶

當它上下擺動蝶翅時，看似是有兩個頭的蝴蝶，小鳥常會誤啄它偽裝成頭部的尾端，使其能有機會死裡逃生再活一次。

## silverline

Nicknamed the “double-headed butterfly,” the silverline is known for having a tail that looks like its head. This serves the species well, as birds often attack the wrong end, allowing it to live another day.

## 2 February

Sun	Mon	Tue	Wed	Thu	Fri	Sat
					1	2
3	4	5	6	7	8	9
10	11	12	13	14	15	16
17	18	19	20	21	22	23
24	25	26	27	28	29	

MON

28  
廿一

TUE

29  
廿二

WED

30  
廿三

THU

31  
廿四

February

FRI

1  
廿五

SAT

2  
廿六

SUN

3  
廿七



# 珠光黃裳鳳蝶

*Troides magellanus*



## 珠光黃裳鳳蝶

在台灣列為保育類，主要產於台灣東南方的蘭嶼小島上，翩然的蝶翅，在不同的角度下，會呈現彩虹珍珠光的豐富色彩，是大型華麗的蝶種。

## Magellan's iridescent birdwing

This species lives only on Orchid Island. Seen from different angles, it can appear to be one of any number of stunning iridescent colors.

2

February

MON

4  
立春

TUE

5  
廿九

WED

6  
三十除夕

THU

7  
正月大

FRI

8  
初二

SAT

9  
初三

SUN

10  
初四



◀ 珠光黃裳鳳蝶-幼蟲  
Larva of *Troides magellanus*

11  
初五

MON

12  
初六

TUE

13  
初七

WED

14  
初八

THU

15  
初九

FRI

16  
初十

SAT

17  
十一

SUN





◀ 珠光黃裳鳳蝶的蛹  
*Pupa of *Troides magellanus**

# 2

February

MON

18  
十二

TUE

19  
雨水

WED

20  
十四

THU

21  
十五

FRI

22  
十六

SAT

23  
十七

SUN

24  
十八

# 枯葉蝶

*Kallima inachus formosana*



## 枯葉蝶

狀似一片乾枯的樹葉，若停在樹上或地上的枯葉堆裏，極不易被發現，是偽裝行家。

## dead leaf butterfly

Resembling a dried leaf, this species is a master of disguise, becoming invisible when it lights on a pile of leaves.

3 March

Sun	Mon	Tue	Wed	Thu	Fri	Sat
						1
2	3	4	5	6	7	8
9	10	11	12	13	14	15
16	17	18	19	20	21	22
23	24	25	26	27	28	29
30	31					



▲ 枯葉蝶 *Kallima inachus formosana*

MON

25  
十九

TUE

26  
二十

WED

27  
廿一

THU

28  
廿二

FRI

29  
廿三

March

SAT

1  
廿四

SUN

2  
廿五

# 大白斑蝶

*Idea leuconoe clara*



## 大白斑蝶

幼蟲攝食有毒植物，成蝶體內留毒用以自保，飛行緩慢，常忘情覓食被人徒手捕捉，故外號叫大笨蝶，蝶翅打開約有15cm，是台灣產斑蝶中最大的一種。

## white tree nymph

The caterpillar of this species feasts on plants poisonous to many species, which makes the resultant butterfly toxic to would-be predators. The white tree nymph's wings are 15 cm wingtip to wingtip when spread out, meaning that it is one of the larger butterfly species. Its sluggish flight has earned it the nickname "big clumsy butterfly."

3

March

MON 3  
廿六

---

TUE 4  
廿七

---

WED 5  
驚蟄

---

THU 6  
廿九

---

FRI 7  
三十

---

SAT 8  
二月小

---

SUN 9  
初二





▲ 大白斑蝶 *Idea leuconoe clara*

10

初三

MON

11

初四

TUE

12

初五

WED

13

初六

THU

14

初七

FRI

15

初八

SAT

16

初九

SUN



◀ 大白斑蝶 *Idea leuconoe clara*

3

March

MON

17  
初十

TUE

18  
十一

WED

19  
十二

THU

20  
春分

FRI

21  
十四

SAT

22  
十五

SUN

23  
十六



◀ 大白斑蝶 *Idea leuconoe clara*

24

十七

MON

25

十八

TUE

26

十九

WED

27

二十

THU

28

廿一

FRI

29

廿二

SAT

30

廿三

SUN



◀ 大白斑蝶 *Idea leuconoe clara*

3

March

MON

31  
廿四

April

TUE

1  
廿五

WED

2  
廿六

THU

3  
廿七

FRI

4  
清明

SAT

5  
廿九

SUN

6  
三月小

# 小紅點粉蝶

*Gonepteryx taiwana*



## 小紅點粉蝶

它的外型就像高麗菜葉片，中間有紅褐色斑紋像葉片銹枯的感覺，數量不多，是台灣山區裡不多見的蝴蝶。

## brimstone

Resembling a cabbage leaf, the brimstone sports a brown spot in the center of its wing, making it seem that a worm has taken a big bite out of it. Few in number, members of this species are a rare sight in Taiwan.



4 April

Sun	Mon	Tue	Wed	Thu	Fri	Sat
		1	2	3	4	5
6	7	8	9	10	11	12
13	14	15	16	17	18	19
20	21	22	23	24	25	26
27	28	29	30			

MON

7  
初二

TUE

8  
初三

WED

9  
初四

THU

10  
初五

FRI

11  
初六

SAT

12  
初七

SUN

13  
初八

# 青帶鳳蝶

*Graphium sarpaedon connectens*



## 青帶鳳蝶

蝴蝶前翅上有土耳其藍斑紋，狀似飛機窗格，其飛行速度甚快，外號噴射機仔。

## common bluebottle

The forewings of this species bear unique turquoise patches arranged like the windows of an airplane. Because it can fly very quickly, it bears the nickname “jet plane.”

4

April

MON

14

初九

TUE

15

初十

WED

16

十一

THU

17

十二

FRI

18

十三

SAT

19

十四

SUN

20

穀雨



◀ 產卵中的青帶鳳蝶

Egg laying of a female *Graphium sarpaedon connectens*

21

十六

MON

22

十七

TUE

23

十八

WED

24

十九

THU

25

二十

FRI

26

廿一

SAT

27

廿二

SUN

4

April

MON

28  
廿三

TUE

29  
廿四

WED

30  
廿五

May

THU

1  
廿六

FRI

2  
廿七

SAT

3  
廿八

SUN

4  
廿九



# 青斑蝶

*Parantica sita nipponica*



## 青斑蝶

本亞種分布台灣與日本間，且有族群交流現象，是最有耐力並能夠飛越海洋的蝴蝶。

## chestnut tiger

The transoceanic trips the chestnut tiger makes between Taiwan and Japan have given it a reputation for stamina and resilience.

5 May

Sun	Mon	Tue	Wed	Thu	Fri	Sat
				1	2	3
4	5	6	7	8	9	10
11	12	13	14	15	16	17
18	19	20	21	22	23	24
25	26	27	28	29	30	31

MON

5  
四月立夏

TUE

6  
初二

WED

7  
初三

THU

8  
初四

FRI

9  
初五

SAT

10  
初六

SUN

11  
初七

# 無尾鳳蝶

*Papilio demoleus*



## 無尾鳳蝶

分布台灣各地，在許多住家的庭園裡可輕易發現她們羽化，交配或產卵等繁殖活動，是容易親近人類的公關型蝴蝶。

## lime

The lime butterfly is commonly found in home gardens all around Taiwan. Seeming to enjoy human companionship, this species can be seen as the “public relations” arm of the butterfly world.

5

May

MON

12  
初八

TUE

13  
初九

WED

14  
初十

THU

15  
十一

FRI

16  
十二

SAT

17  
十三

SUN

18  
十四



▲無尾鳳蝶 *Papilio demoleus*

19

十五

MON

20

十六

TUE

21

小滿

WED

22

十八

THU

23

十九

FRI

24

二十

SAT

25

廿一

SUN

5

May

MON

26  
廿二

TUE

27  
廿三

WED

28  
廿四

THU

29  
廿五

FRI

30  
廿六

SAT

31  
廿七

June

SUN

1  
廿八



# 紅紋粉蝶

*Delias hyparete luzonensis*



## 紅紋粉蝶

是低溫季節可以發現的漂亮蝶種，喜歡吸食聖誕紅花蜜；輕飛慢移，曼妙飄飄，是花中仙子，蝶中西施。

## Painted Jezebel

The painted Jezebel is one of those rare species that are both colorful and can thrive even in the cold. Its favorite repast is the nectar of the poinsettia. A beauty among butterflies, it flits about like a fairy among the flowers.

6 June

Sun	Mon	Tue	Wed	Thu	Fri	Sat
1	2	3	4	5	6	7
8	9	10	11	12	13	14
15	16	17	18	19	20	21
22	23	24	25	26	27	28
29	30					

MON

2  
廿九

TUE

3  
三十

WED

4  
五月小

THU

5  
芒種

FRI

6  
初三

SAT

7  
初四

SUN

8  
初五端午

# 寬尾鳳蝶

*Agehana maraho*



## 寬尾鳳蝶

台灣特有種，因尾部突起特寬，故名「寬尾」，具有二條翅脈貫穿尾突，形成獨特的V字勝利圖案。氣宇軒昂，王者之王，是台灣國寶，也被稱為亞洲蝴蝶王。

## broad-tailed swallowtail

Found only in Taiwan, the broad-tailed swallowtail is the world's only butterfly species to have two wing veins that veer off to form a second wing protuberance, creating its unique V-shaped tail. As the "king of Asian butterflies," it is one of Taiwan's national treasures.

6

June

MON

9  
初六

TUE

10  
初七

WED

11  
初八

THU

12  
初九

FRI

13  
初十

SAT

14  
十一

SUN

15  
十二



▲ 寬尾鳳蝶的幼蟲 Larva of *Agehana maraho*

16

十三

MON

17

十四

TUE

18

十五

WED

19

十六

THU

20

十七

FRI

21

夏至

SAT

22

十九

SUN

6

June

MON

23  
二十

TUE

24  
廿一

WED

25  
廿二

THU

26  
廿三

FRI

27  
廿四

SAT

28  
廿五

SUN

29  
廿六



# 黑脈樺斑蝶

*Danaus genutia*



## 黑脈樺斑蝶

一對正在交配中的黑脈樺斑蝶，另一隻雄蝶飛近後，才發覺自己來得太晚了。

## common tiger

A male common tiger rushes to the scene to compete for the right to mate, but finds that he has arrived a bit too late.

7 July

Sun	Mon	Tue	Wed	Thu	Fri	Sat
		1	2	3	4	5
6	7	8	9	10	11	12
13	14	15	16	17	18	19
20	21	22	23	24	25	26
27	28	29	30	31		

MON

30  
廿七

July

TUE

1  
廿八

WED

2  
廿九

THU

3  
六月小

FRI

4  
初二

SAT

5  
初三

SUN

6  
初四

# 豹斑蝶

*Timelaea albescens formosana*



## 豹斑蝶

蝴蝶體型不大，但卻有花豹的斑紋作保護色，以及與環境融合的智慧。

## spotted leopard

Though small, this butterfly has evolved to match its environment, brandishing a leopard's spots to scare away potential predators.

7

June

MON

7  
小暑

TUE

8  
初六

WED

9  
初七

THU

10  
初八

FRI

11  
初九

SAT

12  
初十

SUN

13  
十一



◀ 白弄蝶 *Abraximorpha davidii*

14

十二

MON

15

十三

TUE

16

十四

WED

17

十五

THU

18

十六

FRI

19

十七

SAT

20

十八

SUN

# 7

July

MON

21  
十九

TUE

22  
大暑

WED

23  
廿一

THU

24  
廿二

FRI

25  
廿三

SAT

26  
廿四

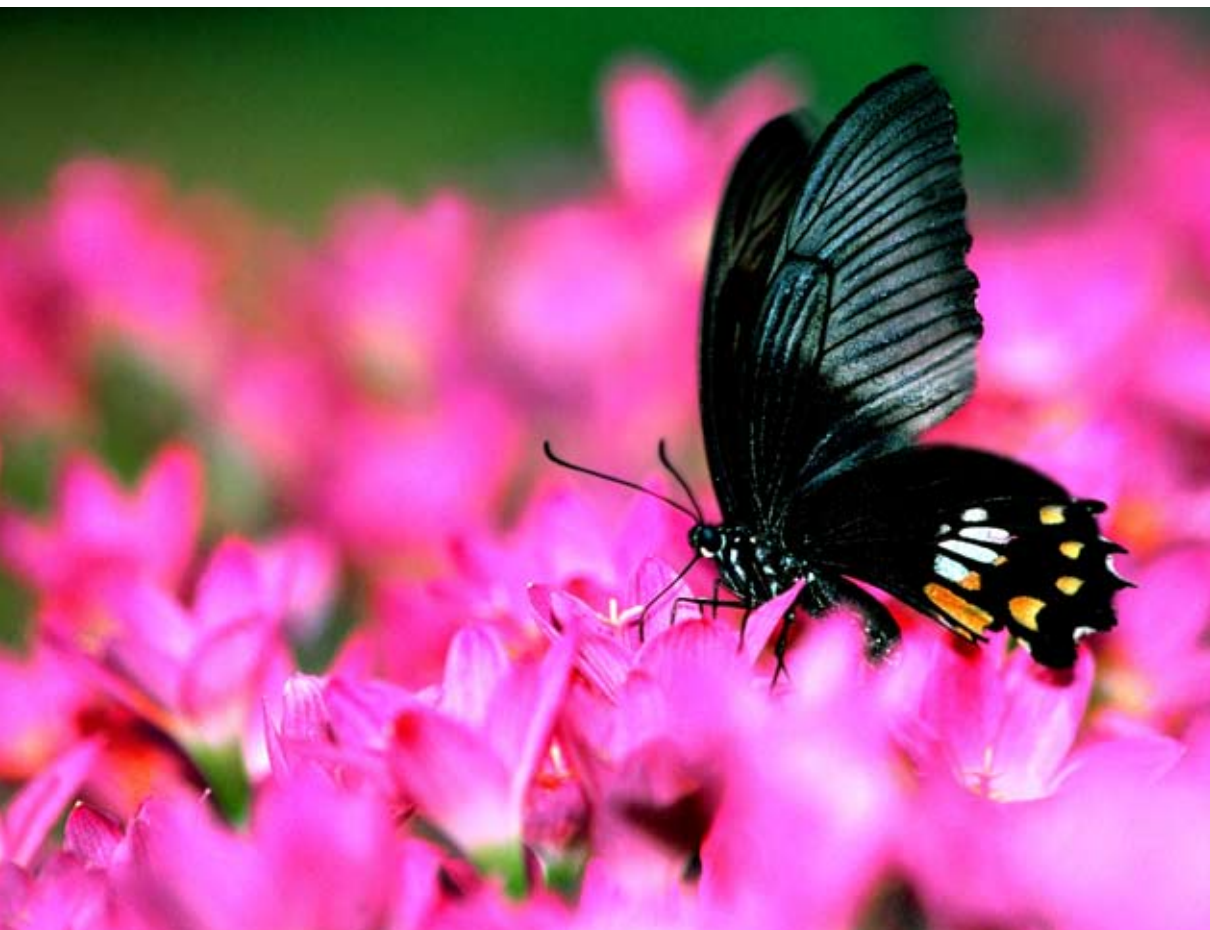
SUN

27  
廿五



# 玉帶鳳蝶

*Papilio polytes pasikrates*



## 玉帶鳳蝶

此蝶飛降花海中暢飲蜜露，常有大量玉帶鳳蝶漫天飛舞，蝶翅上有白銀點點，寓意金玉滿堂花開富貴。

## common Mormon

This common Mormon is enjoying a meal of sweet nectar in mid-flight. The gold and silver spots on its hind wings are said to be a sign of good fortune.

8 August

Sun	Mon	Tue	Wed	Thu	Fri	Sat
					1	2
3	4	5	6	7	8	9
10	11	12	13	14	15	16
17	18	19	20	21	22	23
24	25	26	27	28	29	30
31						

MON

28  
廿六

TUE

29  
廿七

WED

30  
廿八

THU

31  
廿九

August

FRI

1  
七月六

SAT

2  
初二

SUN

3  
初三

# 角紋蛺蝶

*Polygonia c-album asakurai*



## 角紋蛺蝶

後翅中央有銀白色C字紋，又稱C蛺蝶，以枯葉色自保，只要佇立於乾燥的葉堆上，就極不易被發現，是偽裝高手。

## comma

Utilizing camouflage as a defense measure, the comma is an expert at hiding itself amongst piles of dead leaves.

8

August

MON

4  
初四

TUE

5  
初五

WED

6  
初六

THU

7  
立秋

FRI

8  
初八

SAT

9  
初九

SUN

10  
初十

# 孔雀蛺蝶

*Junonia almana*



## 孔雀蛺蝶

蝶翅上的貓頭鷹眼狀斑紋有恫嚇阻敵的功用，當突然展翅時往往可以成功的嚇退敵人。

## peacock pansy

The owl-like “eyes” on the peacock pansy’s wings are useful in intimidating potential predators, for in the food chain, birds eat butterflies; snakes eat birds; and owls eat snakes.

8

August

MON

11  
十一

TUE

12  
十二

WED

13  
十三

THU

14  
十四

FRI

15  
十五

SAT

16  
十六

SUN

17  
十七





◀ 孔雀蛱蝶 *Junonia almana*

18

十八

MON

19

十九

TUE

20

二十

WED

21

廿一

THU

22

廿二

FRI

23

處暑

SAT

24

廿四

SUN

8

August

MON

25  
廿五

TUE

26  
廿六

WED

27  
廿七

THU

28  
廿八

FRI

29  
廿九

SAT

30  
三十

SUN

31  
八月小

# 紅邊黃小灰蝶

*Heliophorus ila matsumurae*



## 紅邊黃小灰蝶

成蝶全年可見，數量不少，體型如拇指甲片般大小，是小型亮麗的蝴蝶。

## purple sapphire

This brightly colored species can be seen year-round, and, being just the size of a fingernail, 1.4cm, is classified as a small butterfly.

9 September

Sun	Mon	Tue	Wed	Thu	Fri	Sat
	1	2	3	4	5	6
7	8	9	10	11	12	13
14	15	16	17	18	19	20
21	22	23	24	25	26	27
28	29	30				

September

MON

1  
初二

TUE

2  
初三

WED

3  
初四

THU

4  
初五

FRI

5  
初六

SAT

6  
初七

SUN

7  
白露

# 墨蝶

*Dichorragia nesimachus formosanus*



## 墨蝶

擁有一身深藍與深綠，在陽光下會反射美麗光澤，展翅時狀似孔雀開屏，分布於台灣中低海拔地帶，但數量稀少不易發現。

## Asian constable

The Asian constable seems more peacock than butterfly when it spreads its wings of brilliant midnight blue.

9

September

MON

8  
初九

TUE

9  
初十

WED

10  
十一

THU

11  
十二

FRI

12  
十三

SAT

13  
十四

SUN

14  
十五中秋



◀ 環紋蝶 *Stichophthalma howqua formosana*

15  
十六

MON

16  
十七

TUE

17  
十八

WED

18  
十九

THU

19  
二十

FRI

20  
廿一

SAT

21  
廿二

SUN



9

September

MON

22  
秋分

TUE

23  
廿四

WED

24  
廿五

THU

25  
廿六

FRI

26  
廿七

SAT

27  
廿八

SUN

28  
廿九

# 姬雙尾蝶

*Polyura narcaea meghaduta*



## 姬雙尾蝶

飛行速度快而且勁力十足，雄氣糾糾，翅脈強健而有力，好像帶劍的善戰勇士。

## China nawab

The energetic China nawab flies very quickly. Upon spreading its wings, it resembles a warrior brandishing a sword.

10 October

Sun	Mon	Tue	Wed	Thu	Fri	Sat
			1	2	3	4
5	6	7	8	9	10	11
12	13	14	15	16	17	18
19	20	21	22	23	24	25
26	27	28	29	30	31	

MON

29  
九月六

TUE

30  
初二

October

WED

1  
初三

THU

2  
初四

FRI

3  
初五

SAT

4  
初六

SUN

5  
初七

# 銀背小灰蝶

*Curetis acuta formosana*



## 銀背小灰蝶

翅背有強烈的銀色反光，分布在中低海拔地帶，此科蝶種極少，在台灣僅有兩種。

## sunbeam

On the back of the sunbeam's wings, one can find the glittering silver catching your eyes. In Taiwan, there are only two kinds of them flying in low to middle altitude area above the sea level.

# 10

October

MON

6  
初八

TUE

7  
初九

WED

8  
寒露

THU

9  
十一

FRI

10  
國慶日

SAT

11  
十三

SUN

12  
十四



◀ 台灣綠蛺蝶 *Euthalia formosana*

13  
十五

MON

14  
十六

TUE

15  
十七

WED

16  
十八

THU

17  
十九

FRI

18  
二十

SAT

19  
廿一

SUN

# 10

October

MON	20 廿二
TUE	21 廿三
WED	22 廿四
THU	23 霜降
FRI	24 廿六
SAT	25 廿七
SUN	26 廿八



# 閃電蝶

*Euthalia irrubescens fulguralis*



## 閃電蝶

此蝶會觀察環境，注意動向，並伺機而動；靜如松，動如風，被稱為蝶中忍者。

## barons

This species is always very observant of its environment. When it moves, it moves with great haste; when it is resting, it is as still as a stone. Because of this, it is considered the “ninja of butterflies.”

11 November

Sun	Mon	Tue	Wed	Thu	Fri	Sat
						1
2	3	4	5	6	7	8
9	10	11	12	13	14	15
16	17	18	19	20	21	22
23	24	25	26	27	28	29
30						

MON

27  
廿九

TUE

28  
三十

WED

29  
十月六

THU

30  
初二

FRI

31  
初三

November

SAT

1  
初四

SUN

2  
初五

# 小紫斑蝶

*Euploea tulliolus koxinga*



## 小紫斑蝶

小紫斑蝶正在享受花蜜，一隻蜜蜂突然飛來，讓它嚇一跳並開翅警戒。

## dwarf crow

Upon being interrupted by a bee while enjoying a meal of nectar, this dwarf crow spreads its wings as if to say, "Back off!"

11

November

MON

3  
初六

TUE

4  
初七

WED

5  
初八

THU

6  
初九

FRI

7  
立冬

SAT

8  
十一

SUN

9  
十二



# 大紫蛺蝶

*Sasakia charonda formosana*



## 大紫蛺蝶

在日本分布的大紫蛺蝶，日本選定為國蝶，為台灣特有亞種，台灣產蛺蝶中體型最大的，在台灣為數極少，陽光輝映下，有著墨金、藍紫、朱紅的幻色之光，是稀有的珍貴保育種。

## Japanese emperor

Rare in Taiwan, the Japanese emperor radiates with a mixture of colors that include goldenrod, periwinkle, and scarlet.

11

November

MON

10  
十三

TUE

11  
十四

WED

12  
十五

THU

13  
十六

FRI

14  
十七

SAT

15  
十八

SUN

16  
十九



▲ 大紫蛺蝶 *Sasakia charonda formosana*

17

二十

MON

18

廿一

TUE

19

廿二

WED

20

廿三

THU

21

廿四

FRI

22

小雪

SAT

23

廿六

SUN



11

November

MON	24 廿七
TUE	25 廿八
WED	26 廿九
THU	27 三十
FRI	28 十一月小
SAT	29 初二
SUN	30 初三

# 蝴蝶樹—越冬的紫斑蝶類

*Euploea spp.*



台灣冬天有大量的紫斑蝶群聚南部越冬，常形成規模龐大的蝴蝶谷與蝴蝶樹奇觀。許多國際觀光客特地慕名至高雄縣茂林國家風景區旅遊、觀賞。

Huge flocks of the dwarf crow winter in southern Taiwan, and when they gather together in a valley or on a single tree, butterfly enthusiasts may enjoy a sight they will not soon forget.

12 December

Sun	Mon	Tue	Wed	Thu	Fri	Sat
	1	2	3	4	5	6
7	8	9	10	11	12	13
14	15	16	17	18	19	20
21	22	23	24	25	26	27
28	29	30	31			

December

MON

1  
初四

TUE

2  
初五

WED

3  
初六

THU

4  
初七

FRI

5  
初八

SAT

6  
初九

SUN

7  
大雪

# 萬物共生共享共榮



大白斑蝶群聚在火筒樹上吸食花蜜；生態要保育、環境要保護才能萬物共生、共享、共榮。

This group of white tree nymphs sipping nectar remind us that we must protect the environment so that all living creatures may live, share, and prosper together.

# 12

December

MON *8*  
十一

---

TUE *9*  
十二

---

WED *10*  
十三

---

THU *11*  
十四

---

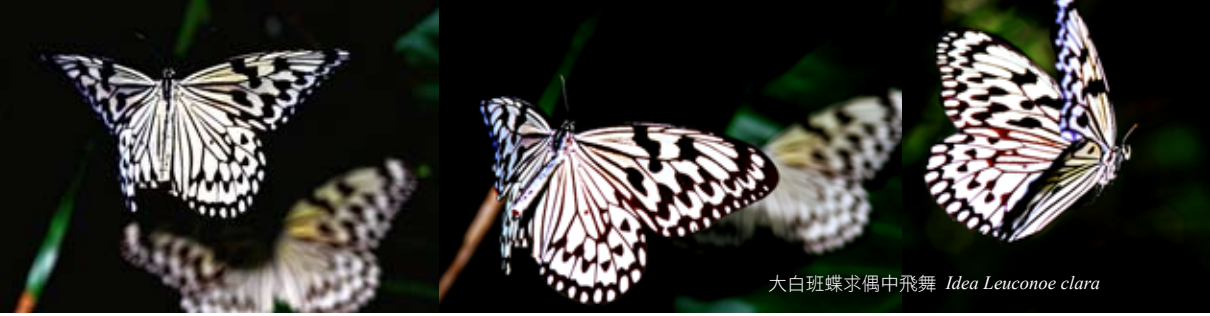
FRI *12*  
十五

---

SAT *13*  
十六

---

SUN *14*  
十七



大白班蝶求偶中飛舞 *Idea Leuconoe clara*

15

十八

MON

16

十九

TUE

17

二十

WED

18

廿一

THU

19

廿二

FRI

20

廿三

SAT

21

冬至

SUN

# 12

December

MON 22  
廿五

---

TUE 23  
廿六

---

WED 24  
廿七

---

THU 25  
廿八

---

FRI 26  
廿九

---

SAT 27  
十二月大

---

SUN 28  
初二



# 人與自然和諧相處



野外工作，汗液鹽分殘留鞋上，吸引蝴蝶群聚覓食，象徵人與自然環境和諧相處（把鞋子合放一起，諧音為和諧）。

After working or playing outdoors, the salt left behind by your sweat may attract butterflies. The scene pictured here symbolizes the harmonious relationship between humans and nature (in Mandarin, the word for “placing shoes together” is a homophone of the word for “harmony”—*hesie*).

MON

29  
初三

TUE

30  
初四

WED

31  
初五

THU

2009 1  
小寒

FRI

2  
初七

SAT

3  
臘八節

SUN

4  
初九





# 山野蝴蝶飛

Butterflies in the Wild 2008

發行人：金恒鑣

撰文：蔡百峻·蕭麗娜

策劃：陸聲山

執行編輯：呂依純·林宜平

美術編輯：Vdesign視覺設計中心

攝影：蔡百峻

出版單位：行政院農業委員會林業試驗所

10066台北市中正區南海路53號

電話：(02)2303-9978

傳真：(02)2314-2234

網址：<http://www.tfri.gov.tw>

印刷：財團法人台北市私立勝利身心障礙潛能發展中心 (02)2325-8576

出版日期：中華民國九十六年十二月 初版

Publisher/ Hen-biau KING

Writers/ Bae-chun TSAI, Lina HSIAO

Editor/ Sheng-Shan LU

Executive Editor/ I-chun LU, Yi-ping LIN

Art Editor/ Vdesign

Photographer/ Bae-chun TSAI

Published by/ Taiwan Forestry Research Institute

53 Nan-hai Road, Taipei 10066, Taiwan

Tel/(+886) 2 2303-9978

Fax/(+886) 2 2314-2234

<http://www.tfri.gov.tw>

Printer/Victory Printing Co., Ltd. (+886) 2 2325-8576

Published in December 2007

Copyright © All rights reserved by Taiwan EcoArt Gift Co. Ltd.

圖文有著作權 未經同意請勿使用

圖檔授權請洽 尊古重今文化創意產業管理有限公司

山野蝴蝶飛 網址 [www.mrbutterfly.com.tw](http://www.mrbutterfly.com.tw)